

4.3.1 - Institution frequently updates its IT facilities including Wi-Fi

With the increasing demand for internet access in educational campuses due to evolving standard of education and flexibility offered by the Internet - universities, colleges, educational institutes etc., are keenly stepping forward to setup secured and stable wired or Wi-Fi network campus for their students. As per the current market trend, most of the students like to carry 3-4 devices with them like mobile, tablets, laptops, ipods etc. to campus. As these devices devour bandwidth, colleges and universities are struggling hard to keep up with the bandwidth demand. Educational campuses have major requirements of user access control, control over bandwidth consumption, and differentiated policy control for management faculty's access and student's access. These campuses with wired and wireless internet access require seamlessly roaming facility to access internet from class room to library to labs and residential areas. Laying complete network with different vendor solution would be very costly effort and difficult to manage while technical issues. Education institutes require cost-efficient comprehensive solution that offers all the advance facilities and features in single platform with single point of contact for technical support.

Currently we are using D-VoiS Communications Private Limited line of 100 MBPS. Also we have provided Wi-Fi facility to students in campus. Campus is having 100 MBPS of high speed internet facility. The institute has a 24X7 WiFi facility in the college campus for the student and faculty members to avail internet connection at any place in the college. The connectivity through a fully networked campus with state-of-the-art IT infrastructure, computing & communication resources, offers students the facilities of e-mail, net surfing, up/down loading of web based application, besides helping them in preparing projects & seminars.

DETAILS OF IT INFRASTRUCTURE

S.No	Description	2020-21
1	Desktop Computers	70
2	Biometric	7
3	Cc Cameras	25
4	Antivirus	3
6	Wifi	6
7	Internet band width(Vainavi)	100MBPS
8	Operating Systems	WINDOWS 7,windows 10,ubuntu
9	Led/Lcd Projectors	8
10	Printers /Scanners	6
11	Ups	1
18	Monitors	70

DISTRIBUTION OF COMPUTERS

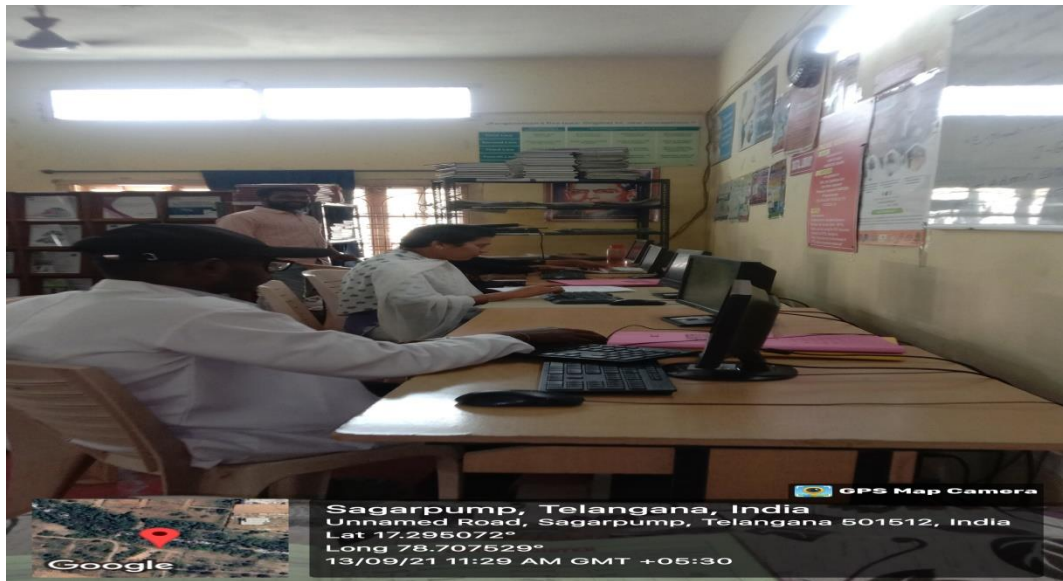
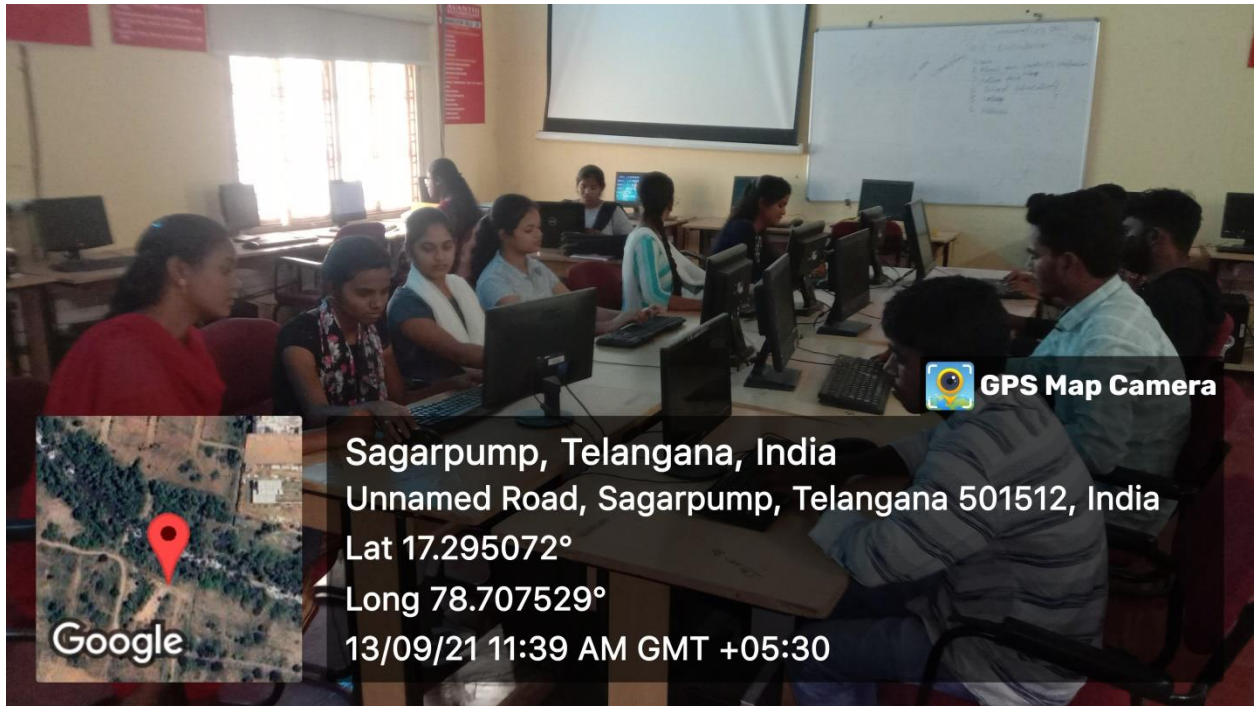
S.NO	DEPARTMENT	PARTICULARS	NO. OF SYSTEMS
1	Computer lab		48
2	Pharmacology lab		4
3	Instrumentation lab		3
4	LIBRARY	LIBRARY	6
5	OFFICE	PRINCIPAL	1
8		EXAM BRANCH	6
10		HODS	2

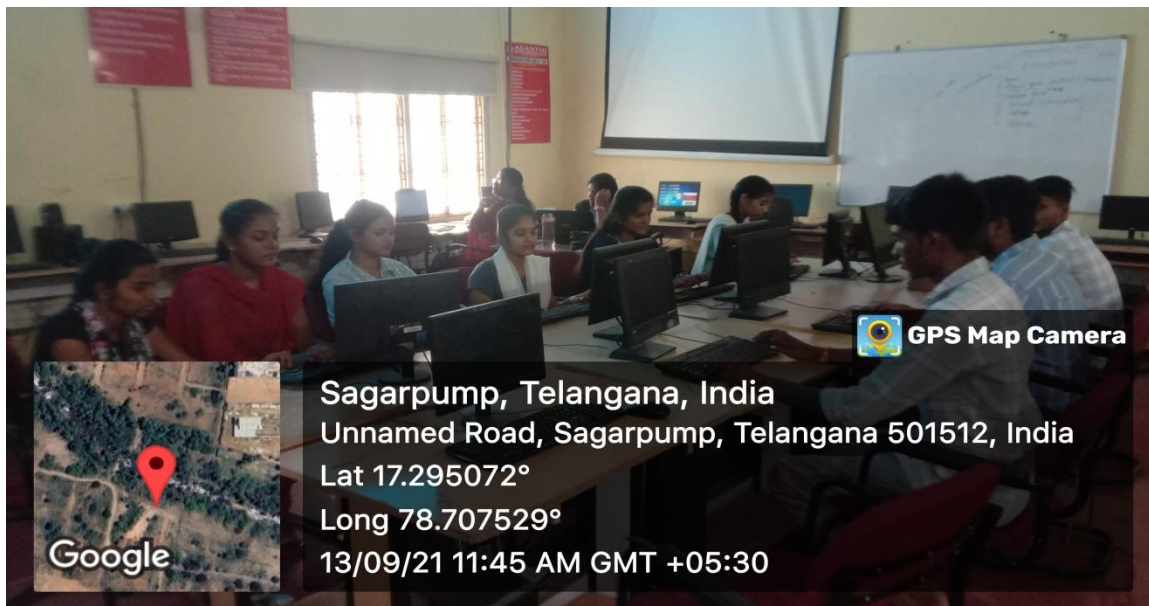
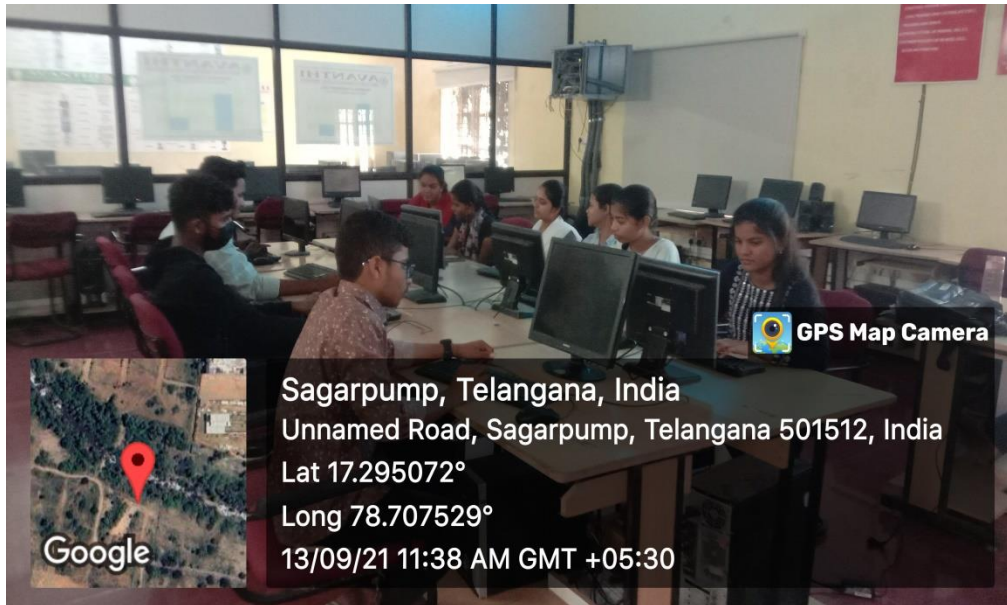
SYSTEMS CONFIGURATION

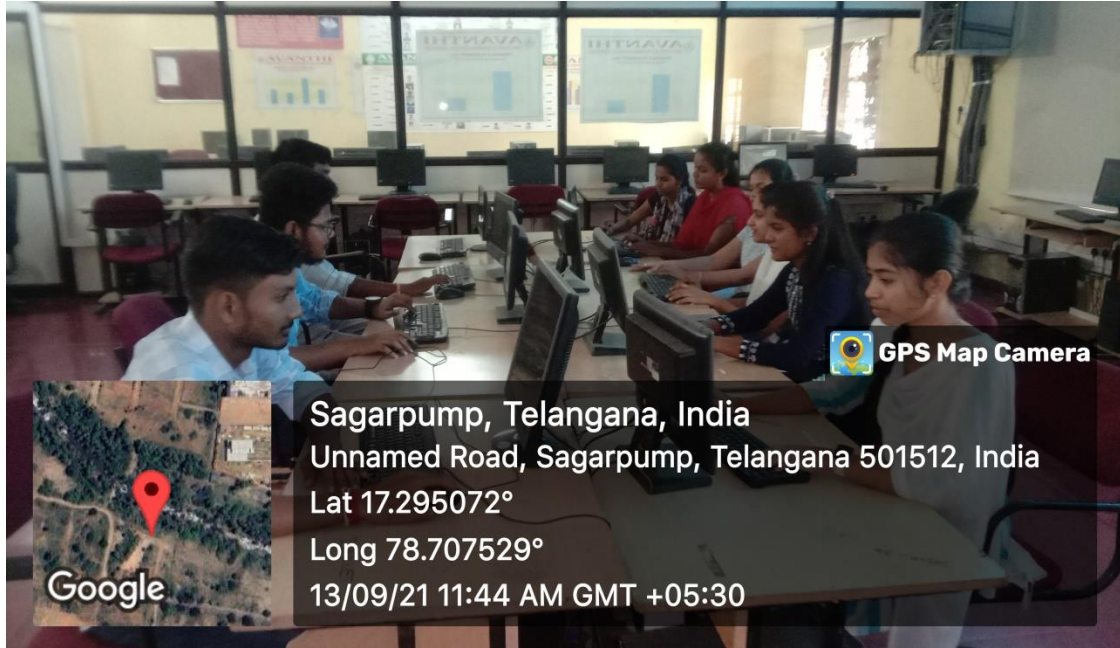
S. No	Configuration Details	No. of Systems
1	Intel P-IV Intel mother board,160GB HDD,2GB RAM, Keyboard, Mouse 10 Mbps Ethernet Card,14.5” LCD Screen	48
4	I 3 Processor, 3.2 GHZ, 4 GB Ram, 500GB Hard disc, Keyboard ,Mouse,Ethernet,17” LCD	22
	Total	70

S.NO	MAC ADDRESS	LOCATION(LAB/ROOM NO)	LAB NAME
1	00-1E-90-E8-57-96	GROUND FLOOR , ROOM NO.3	COMPUTER LAB
2	BC-5F-F4-E0-5B-50	GROUND FLOOR , ROOM NO.3	COMPUTER LAB
3	BC-5F-F4-E0-51-08	GROUND FLOOR , ROOM NO.3	COMPUTER LAB
4	00-30-67-C6-99-D4	GROUND FLOOR , ROOM NO.3	COMPUTER LAB
5	00-30-67-13-E0-2A	GROUND FLOOR , ROOM NO.3	COMPUTER LAB
6	1C-6F-65-3E-24-1B	GROUND FLOOR , ROOM NO.3	COMPUTER LAB
7	00-30-67-13-DF-D1	GROUND FLOOR , ROOM NO.3	COMPUTER LAB
8	00-30-67-13-08-91	GROUND FLOOR , ROOM NO.3	COMPUTER LAB
9	BC-5F-F4-E0-5B-51	GROUND FLOOR , ROOM NO.3	COMPUTER LAB
10	00-30-67-19-1E-DD	GROUND FLOOR , ROOM NO.3	COMPUTER LAB
11	00-30-67-19-27-E7	GROUND FLOOR , ROOM NO.3	COMPUTER LAB
12	00-30-67-03-53-50	GROUND FLOOR , ROOM NO.3	COMPUTER LAB
13	00-1E-90-E7-80-CA	GROUND FLOOR , ROOM NO.3	COMPUTER LAB
14	00-30-67-B4-D1-C6	GROUND FLOOR , ROOM NO.3	COMPUTER LAB
15	00-30-67-13-E6-4E	GROUND FLOOR , ROOM NO.3	COMPUTER LAB
16	00-30-67-13-E6-53	GROUND FLOOR , ROOM NO.3	COMPUTER LAB
17	00-30-67-10-84-01	GROUND FLOOR , ROOM NO.3	COMPUTER LAB
18	1C-6F-65-3D-63-BA	GROUND FLOOR , ROOM NO.3	COMPUTER LAB
19	00-30-67-C6-9E-89	GROUND FLOOR , ROOM NO.3	COMPUTER LAB
20	00-30-67-10-99-5B	GROUND FLOOR , ROOM NO.3	COMPUTER LAB
21	00-30-67-C6-9B-A5	GROUND FLOOR , ROOM NO.3	COMPUTER LAB
22	BC-5F-F4-E0-4F-E2	GROUND FLOOR , ROOM NO.3	COMPUTER LAB
23	00-30-67-D3-44-26	GROUND FLOOR , ROOM NO.3	COMPUTER LAB
24	00-30-67-13-F0-7F	GROUND FLOOR , ROOM NO.3	COMPUTER LAB
25	00-30-67-10-98-27	GROUND FLOOR , ROOM NO.3	COMPUTER LAB
26	00-30-67-03-44-26	GROUND FLOOR , ROOM NO.3	COMPUTER LAB
27	00-1E-90-D0-8A-5F	GROUND FLOOR , ROOM NO.3	COMPUTER LAB
28	00-21-97-73-6C-4F	GROUND FLOOR , ROOM NO.3	COMPUTER LAB
29	00-30-67-C6-9B-A5	GROUND FLOOR , ROOM NO.3	COMPUTER LAB V
30	00-30-67-79-E1-82	GROUND FLOOR , ROOM NO.3	COMPUTER LAB
31	00-1E-90-E8-8D-F5	GROUND FLOOR , ROOM NO.3	COMPUTER LAB
32	BC-5F-F4-E0-56-F6	GROUND FLOOR , ROOM NO.3	COMPUTER LAB

33	00-21-97-73-6E-30	GROUND FLOOR , ROOM NO.3	COMPUTER LAB
34	70-85-C2-7B-30-D2	GROUND FLOOR , ROOM NO.3	COMPUTER LAB
35	B8-97-5A-CF-D7-06	GROUND FLOOR , ROOM NO.3	COMPUTER LAB
36	00-14-85-91-77-DB	GROUND FLOOR , ROOM NO.3	COMPUTER LAB
37	B8-97-5A-A8-7F-90	GROUND FLOOR , ROOM NO.3	COMPUTER LAB
38	B8-97-5A-A8-76-61	GROUND FLOOR , ROOM NO.3	COMPUTER LAB
39	00-E0-4D-85-6D-AD	GROUND FLOOR , ROOM NO.3	COMPUTER LAB
40	00-E0-4C-EE-53-B9	GROUND FLOOR , ROOM NO.3	COMPUTER LAB
41	00-19-66-F3-97-4D	GROUND FLOOR , ROOM NO.3	COMPUTER LAB
42	00-30-67-25-E4-53	GROUND FLOOR , ROOM NO.3	COMPUTER LAB
43	00-E0-4C-EE-5B-AA	GROUND FLOOR , ROOM NO.3	COMPUTER LAB
44	B8-97-5A-A8-7D-27	GROUND FLOOR , ROOM NO.3	COMPUTER LAB
45	0A-E0-AF-B7-06-EE	GROUND FLOOR , ROOM NO.3	COMPUTER LAB
46	00-30-67-10-99-CC	GROUND FLOOR , ROOM NO.3	COMPUTER LAB
47	00-E0-AF-F2-2A-B2	GROUND FLOOR , ROOM NO.3	COMPUTER LAB
48	00-30-67-13-E0-2A	GROUND FLOOR , ROOM NO.3	COMPUTER LAB
49	0A-E0-AF-A3-10-14	FIRST FLOOR , ROOM NO 101	LIBRARY
50	00-E0-4C-36-02-1E	FIRST FLOOR , ROOM NO 101	LIBRARY
51	00-1E-4F-E3-40-51	FIRST FLOOR , ROOM NO 101	LIBRARY
52	94-DE-80-36-F9-2A	FIRST FLOOR , ROOM NO 101	LIBRARY
53	BC-5F-F4-E0-5B-50	FIRST FLOOR , ROOM NO 101	LIBRARY
54	00-24-21-E2-65-0E	FIRST FLOOR , ROOM NO 101	LIBRARY
55	B8-97-5A-14-AB-7D	GROUND FLOOR , ROOM NO.9	EXAM BARANCH
56	B7-CR-71-30-0R-ZA	GROUND FLOOR , ROOM NO.9	EXAM BARANCH
57	B8-97-5A-19-A7-56	GROUND FLOOR , ROOM NO.9	EXAM BARANCH
58	BC-5F-F4-F0-4F-08	GROUND FLOOR , ROOM NO.9	EXAM BARANCH
59	00-1E-90-E8-94-C6	GROUND FLOOR , ROOM NO.9	EXAM BARANCH
60	00-1E-90-E7-76-5E	GROUND FLOOR , ROOM NO.9	EXAM BARANCH
61	00-21-97-73-4C-31	THIRD FLOOR, ROOM NO. 307	PHARMACOLOGY LAB
62	00-14-2A-8B-79-DA	THIRD FLOOR, ROOM NO. 307	PHARMACOLOGY LAB
63	00-30-67-10-89-0F	THIRD FLOOR, ROOM NO. 307	PHARMACOLOGY LAB
64	00-30-67-19-18-7C	THIRD FLOOR, ROOM NO. 307	PHARMACOLOGY LAB
65	00-14-1A-8A-1D-84	THIRD FLOOR, ROOM NO.304	INSTRUMENTATION ROOM
66	00-30-67-19-19-5D	THIRD FLOOR, ROOM NO.304	INSTRUMENTATION ROOM
67	00-30-67-10-88-ED	THIRD FLOOR, ROOM NO.304	INSTRUMENTATION ROOM
68	00-1E-90-E8-30-9B	GROUND FLOOR , ROOM NO.10	PRINCIPAL ROOM
69	00-30-67-10-93-B3	GROUND FLOOR , ROOM NO.	HOD ROOM
70	00-21-97-73-4E-41	GROUND FLOOR , ROOM NO.	HOD ROOM








 GPS Map Camera



Google

Sagarpump, Telangana, India
Unnamed Road, Sagarpump, Telangana 501512, India
Lat 17.295072°
Long 78.707529°
13/09/21 11:44 AM GMT +05:30

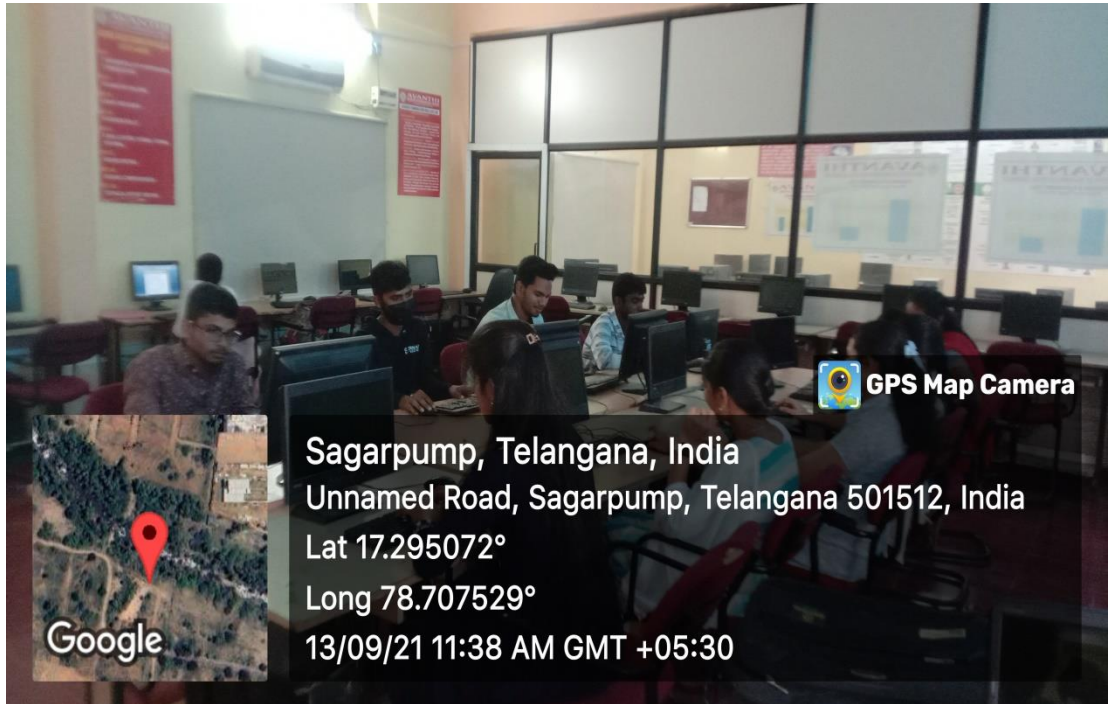


 GPS Map Camera

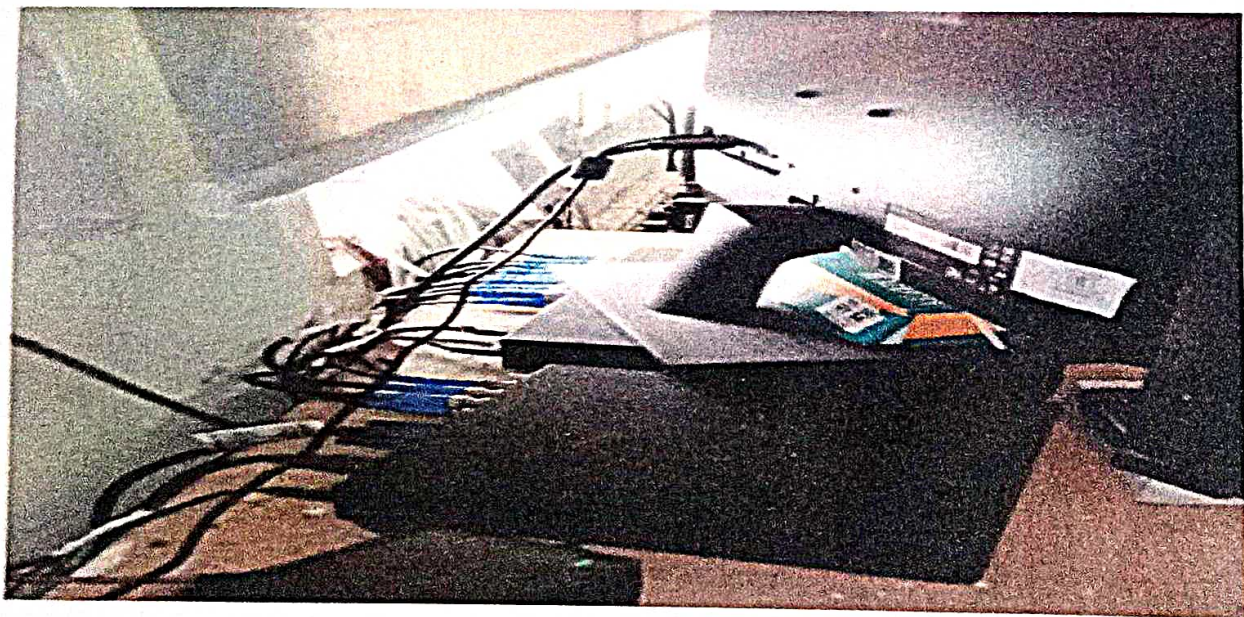
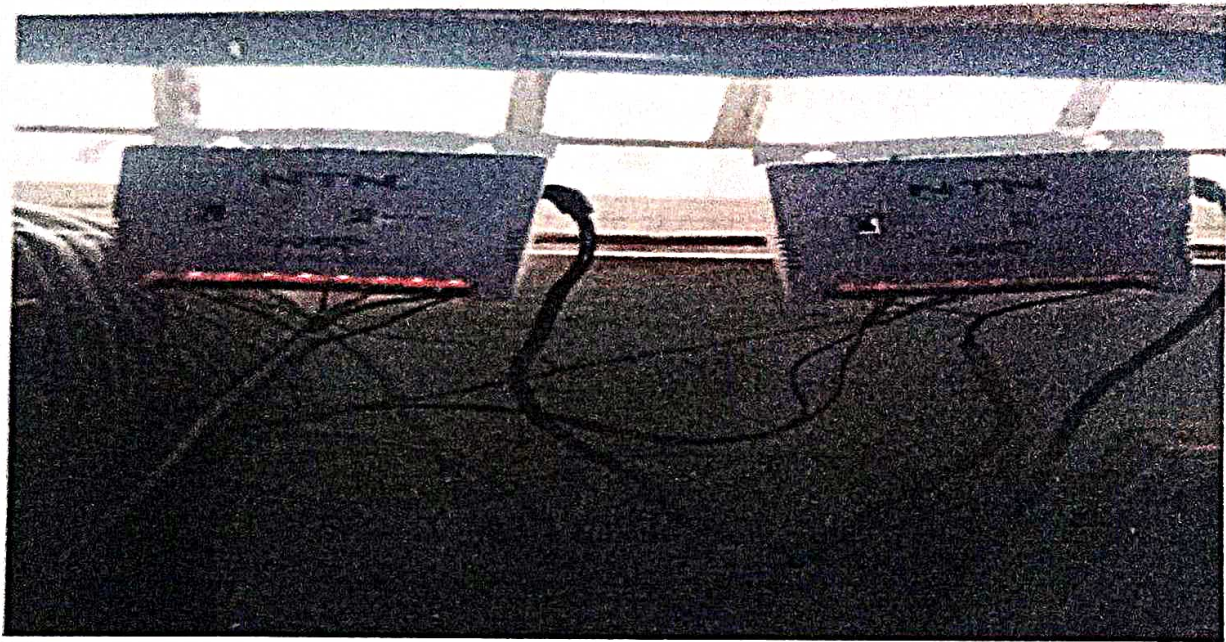


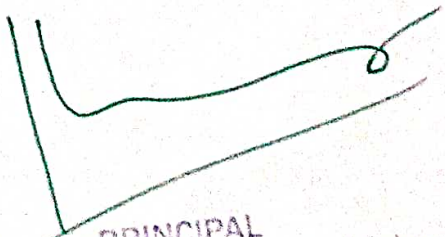
Google

Sagarpump, Telangana, India
Unnamed Road, Sagarpump, Telangana 501512, India
Lat 17.295072°
Long 78.707529°
13/09/21 11:44 AM GMT +05:30








- PRINCIPAL
Avanthi Institute of Pharmaceutical Sciences
Gunthapally (V), Hayath Nagar (M),
Ranga Reddy Dist.